

# Quality Status Report- Map Style Guide

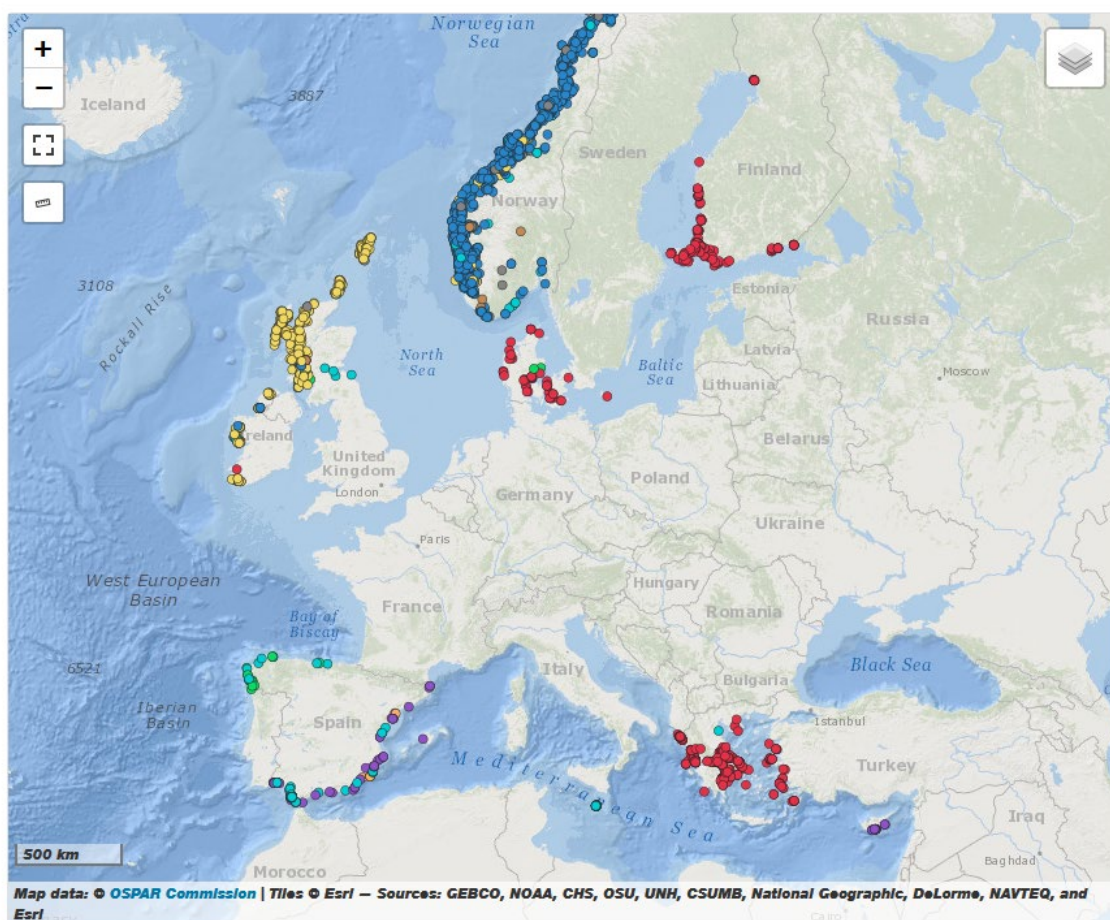
To ensure consistency in presentation and to enable the functionality of ODIMS and OAP to be maximised, presented are a few suggestions for map styling as well as some limitations of the available technology.

## 1. Points:

- a. Basic coloured points with a coloured outline. The shape of the point can be circle, square or triangle.

## EMODnet Aquaculture - Finfish

EMODnet Human Activities European Finfish production sites and locations - Web Feature Service

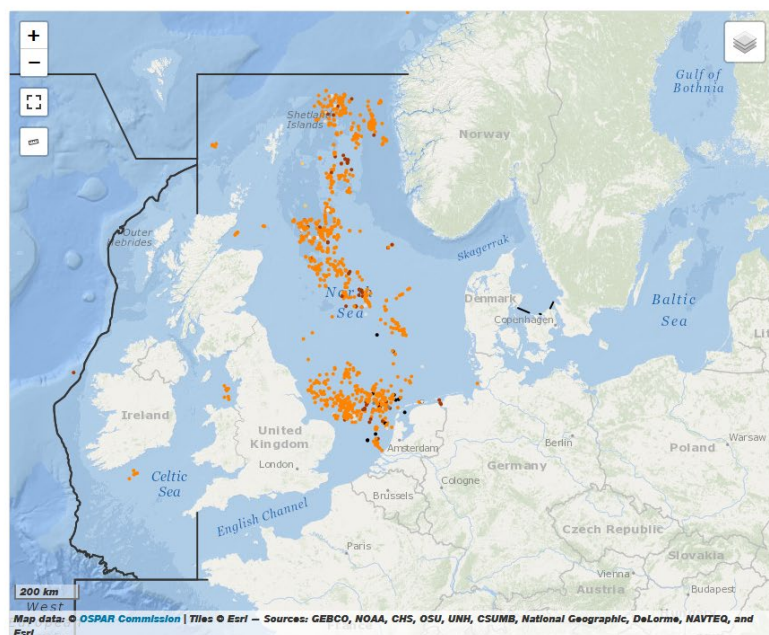


<https://odims.ospar.org/en/maps/emodnet-aquaculture-finish/>

- ## IA2017 - Beach Litter - Average Number of Litter Items

[https://odims.ospar.org/en/maps/eurostat-main-cargo-reight-handled-2018\\_gpkkl/](https://odims.ospar.org/en/maps/eurostat-main-cargo-reight-handled-2018_gpkkl/)

- ## OSPAR Inventory of Offshore Installations - 2013



<https://odims.ospar.org/en/maps/map-inventory-of-offshore-installations-2013/>

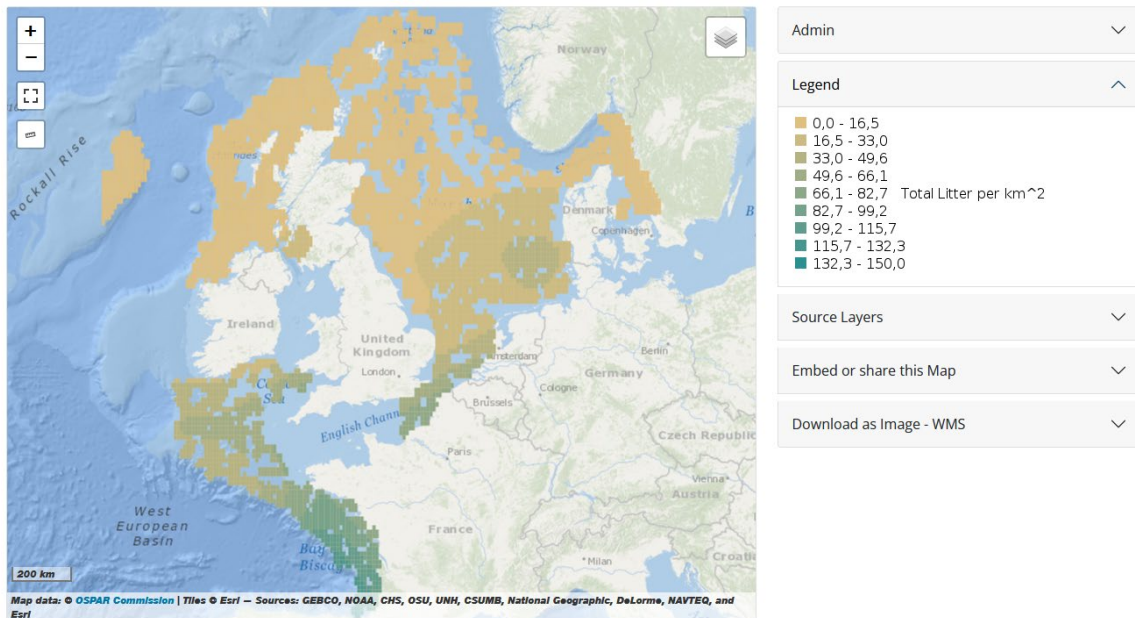


## 2. Polygons:

- a. Basic coloured polygons with/without outline.

### IA2017 Seabed Litter - Relative number of litter items per square km

Intermediate Assessment 2017 - Seabed Litter - Litter is widespread on the seafloor across the area assessed, with plastic being the predominant material encountered. In the areas assessed, higher amounts of litter are found in the Eastern Bay of Biscay, Southern Celtic Seas and English Channel relative to the north of the Greater North Sea and English Channel relative to the north of the Greater North Sea and Celtic Seas.

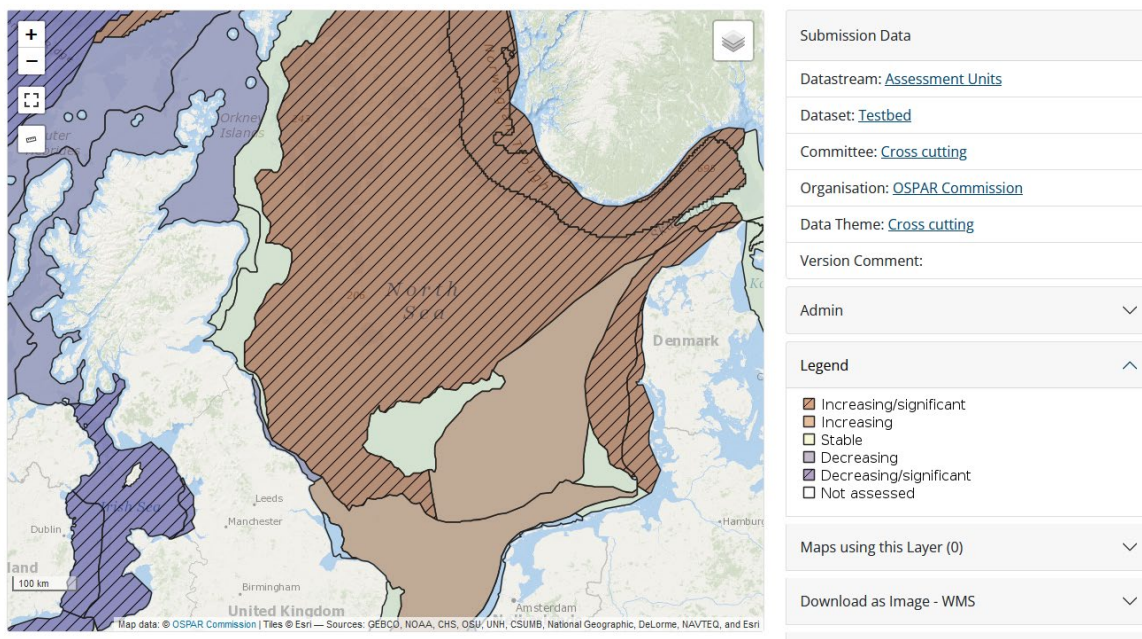


[https://odims.ospar.org/en/maps/ia2017-seabed-litter\\_items-per-square-km\\_5gmh9/](https://odims.ospar.org/en/maps/ia2017-seabed-litter_items-per-square-km_5gmh9/)




- b. Polygons with diagonal line hatching fill with/without outline, and functionality to adjust fill opacity.

### OSPAR Testbed - 2022

22 January 2022



This is an example layer and is restricted, so there is no link.

Submission Data
Datastream: <a href="#">EMODnet Human Activities</a>
Dataset: <a href="#">Pipelines</a>
Committee: <a href="#">Cross cutting</a>
Organisation: <a href="#">OSPAR Commission</a>
Data Theme: <a href="#">Cross cutting</a>
Version Comment: Initial version
Admin 
Legend 
<ul style="list-style-type: none"><li>/ Abandoned</li><li>/ Active</li><li>/ N/A</li><li>/ Not in use</li><li>/ Planned</li><li>/ Pre-commissioning</li><li>/ Proposed</li><li>/ Under construction</li></ul>
Maps using this Layer (0) 



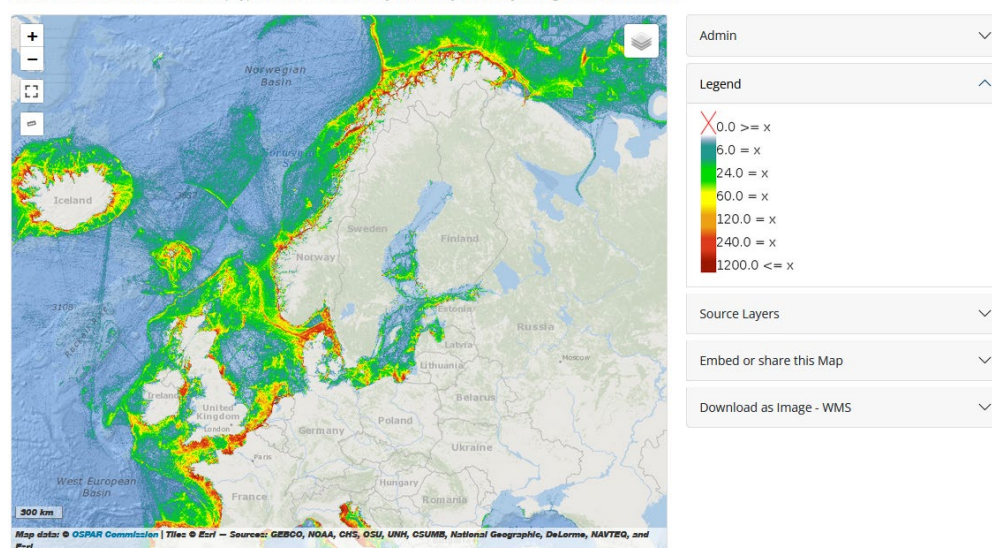
[https://odims.ospar.org/en/submissions/ospar\\_pipelines\\_2019\\_05/](https://odims.ospar.org/en/submissions/ospar_pipelines_2019_05/)

#### 4. Webservices:

1. Data presented according to the Web Map Service it is served from. Colours etc are defined by the data distributor so cannot be changed.

#### EMODnet Human Activities Vessel Density Mapping - Fishing, 2019 - Map

<http://www.emodnet-humanactivities.eu/search-results.php?dataname=Vessel+Density+> EMODnet Vessel Density Map were created by Cogea in 2019 in the framework of EMODnet Human Activities, an initiative funded by the EU Commission. The maps are based on AIS data purchased by CLS and show shipping density in 1km\*1km cells of a grid covering all EU waters (and some neighbouring areas). Density is expressed as hours per square kilometre per month. The following ship types are available: 0 Other, 1 Fishing, 2 Service, 3 Dredging or underwater ops, 4 Sailing, 5 Pleasure Craft, 6 High speed craft, 7 Tug and towing, 8 Passenger, 9 Cargo, 10T anker, 11 Military and Law Enforcement, 12 Unknown and All ship types. Data are available by month of year. Yearly averages are also available.



[https://odims.ospar.org/en/maps/emodnet-human-activities-fishing-2019-map\\_e522y/](https://odims.ospar.org/en/maps/emodnet-human-activities-fishing-2019-map_e522y/)

#### 5. Colouring:

- a. There are a defined set of colours for representing Contracting Parties:

[https://www.ospar.org/site/assets/files/44056/writing\\_styleguide\\_updated\\_nov2021.pdf](https://www.ospar.org/site/assets/files/44056/writing_styleguide_updated_nov2021.pdf)

BE	199	179	211
CH	0	189	142
DE	70	191	189
DK	122	63	145
ES	88	84	138
FI	217	205	41
FR	255	134	67
IE	116	143	30
IS	242	227	153
LU	15	116	175
NL	96	95	91
NO	248	175	49
PT	160	203	216
SE	0	132	140
UK	109	141	154